

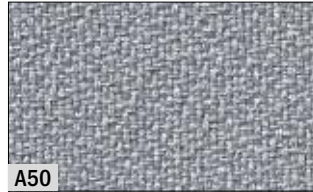
Stoffgruppe A/Krepp

100% Polyester Trevira CS ca. 400g/lfm., Breite 1700mm, Brandschutz DIN 4102 B1, scheuerfest 20.000 Touren (Martindale), lichtecht 5-6



A52

silver



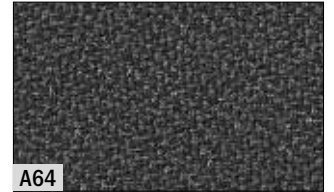
A50

medium grey



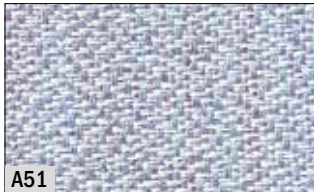
A53

nickel



A64

anthracite



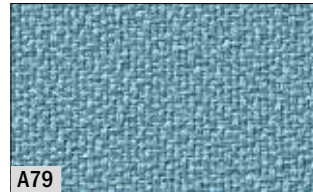
A51

heather



A68

sky



A79

baltic sea



A54

reseda



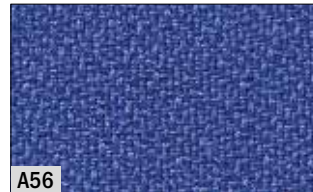
A80

spring



A70

cyan blue



A56

daylight blue



A59

steel



A62

dark blue



A93

purple



A92

bordeaux



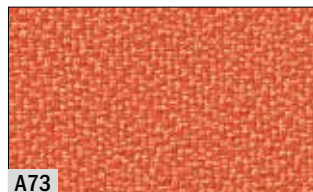
A65

red



A67

terracotta



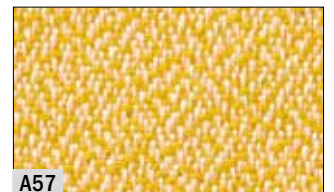
A73

orange



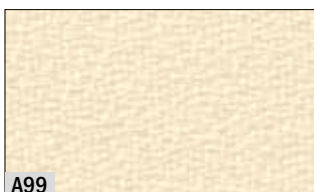
A66

yellow



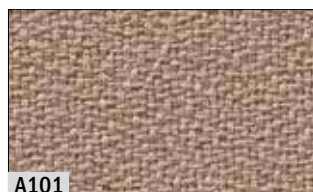
A57

sunshine



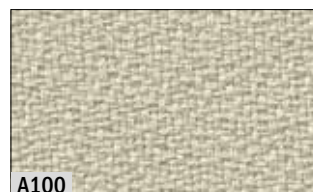
A99

beach



A101

nougat



A100

grit



A98

stone

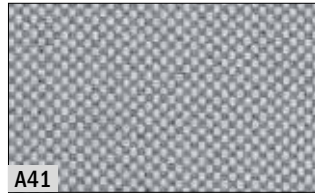
Stoffgruppe A/Lino

100% Polyester Trevira CS ca. 400 g/lfm., Breite 1700mm Brandschutz DIN 4102 B1, scheuerfest 20.000 Touren (Martindale), lichtecht 5-6



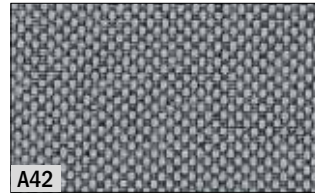
A459

champagne



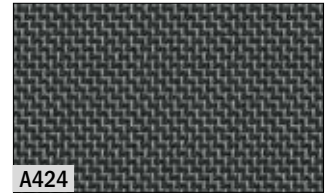
A41

cloud



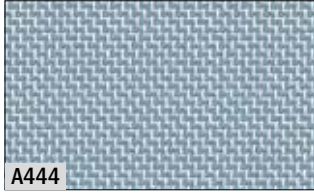
A42

graphite



A424

onyx



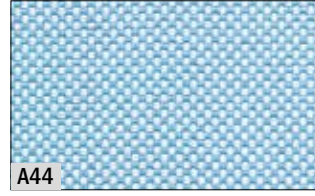
A444

river



A43

ice blue



A44

pacific



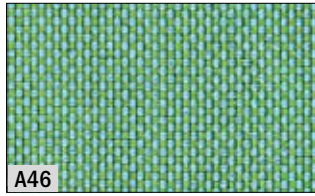
A40

arctic



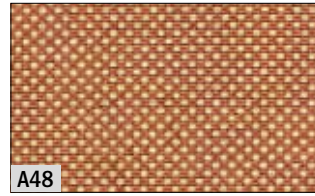
A45

deep sea



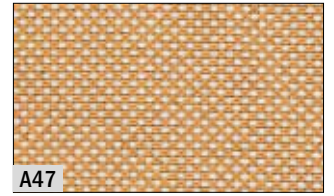
A46

jade



A48

indian



A47

wheat

Stoffgruppe A/Lana

70% Viskose/30% Wolle, ca. 310 g/lfm., Breite 1900mm Brandschutz M1



A260

dust



A261

granite



A262

camel



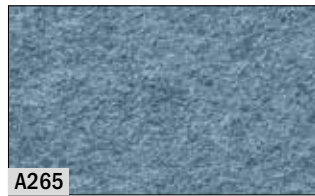
A263

quartz



A264

glacier



A265

jeans



A266

ink



A267

night



A268

avocado



A269

jungle



A270

tomato



A271

fire

Die Abbildungen der Stoffmuster sind nicht farbecht und können vom Original abweichen.

CK 12/2016/1 820360